



CREATING INNOVATION AND DIFFERENCE

ATTUNE



Self Adjusting
Mattress Replacement System
with Optional Alternating Pressure for
Outstanding Pressure Relief

The Attune Mattress provides self adjusting therapy for prevention, early intervention and treatment of pressure ulcers in any clinical setting.

The optional control unit provides more aggressive alternating pressure therapy.



Features

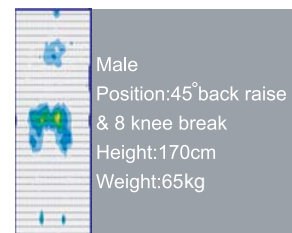
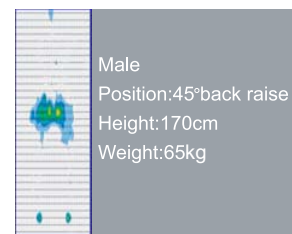
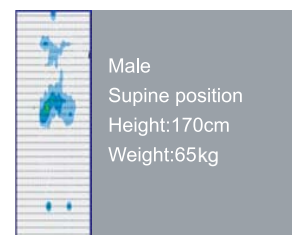
1. Pressure release valves provide non-powered, self adjusting therapy to redistribute interface pressure as the patient moves in bed.
2. Optional control unit provides aggressive alternating pressure therapy for patients with existing ulcers.
3. Viscoelastic foam in the topper's midsection supplies optimal patient comfort.
4. Reinforced handles on the bottom cover make the mattress easier to carry
5. Constructed with a fluid resistant quilted nylon cover to greatly reduce friction and shear forces.
6. Two options for top cover - standard flat cover or a safety bolster cover with raised foam perimeter.

Specifications

- Dimension: (L)80"x(W)35"x(H)11"
- Weight: 38.6lbs
- Weight capacity: 350lbs
- Top cover: Nylon coated with PU, blue color
- Topper: 2" Single layer foam
- Cell: PVC material with single layer foam inside
- Cell number: 10 cells with 4"high, 5" when inflated
- Bottom Cover: Polyester material coated with PVC, Black color

Optional

- Stretchable top cover as an option
- Input Voltage: 110V ~ 120V / 220V ~ 240V
- Frequency: 50Hz ~ 60Hz



PRESSURE MAPPING