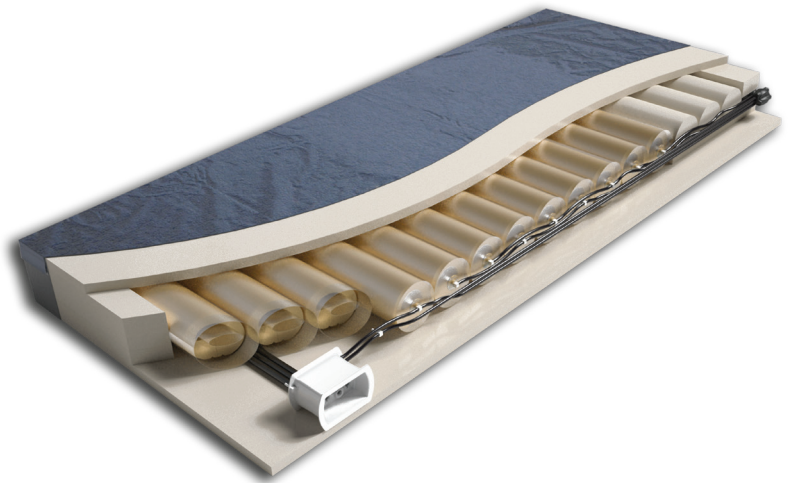


## Non-Powered Convertible Air Foam Therapy System

- ◊ Non-powered mattress replacement can be used without a control unit attached
- ◊ The P.R.O. Matt Plus converts to provide alternating pressure therapy with attachment of optional control unit as needed
- ◊ In non-powered mode, four-zone system (head, shoulder, torso and foot) with inner air core reproduces the surface pressure profile of a therapeutic low air loss mattress
- ◊ P.R.O. Technology valve maintains optimal air pressures in each therapy zone for superior pressure redistribution regardless of patient weight and profile
- ◊ One-inch viscoelastic topper enhances pressure redistribution and patient comfort



### More Features and Benefits

- ◊ Surrounding firm perimeter provides stability and patient safety by eliminating gaps between bed frames and siderails or assist devices
  - Provides added patient security when optional raised side walls not used
  - Incorporates cut-out which facilitates ingress/egress
- ◊ Self-calibrating design needs no manual inflation
- ◊ Waterproof nylon therapy cover standard and provides low friction, low shear surface
- ◊ Raised sidewalls and stretch cover available as additional options
- ◊ Maintenance-free except for normal surface cleaning



## Key Features

### MAXIMUM WEIGHT CAPACITY<sup>1</sup>

500 lbs

### MATTRESS DIMENSIONS

Width: 36" (91.4cm) or 42" (106.7cm)

Length: 80" (203.2cm) or 84" (213.4cm)

Height: 7" (17.8cm)

### COVER

Zippered Nylon or 4-way Stretch

### MATTRESS DIMENSIONS

Mattress: 5-years

Cover: 1-year

<sup>1</sup>Mattress weight capacity only; total weight must not exceed bed frame manufacturer's specified load capacity. Joerns reserves the right to change specifications without notice.

## Optional Control Unit Specifications

Feature	P.R.O. Technology Control Unit	CBC Basic Control Unit
Dimensions	12.4" W x 7.7" H x 4.3" D (31.5 cm W x 19.5 cm H x 4.3 cm D)	11.18" W x 5.6" H x 3.5" D
Weight	6 lbs. (2.7 kg)	4.2 lbs.
Comfort Settings	5	10
Cycle Times	5, 10, 15, 20 minutes	10 minutes
Modes of Operation	3 - Autofirm, Alternating and Therapy	2 - Alternate and Static
Lockout	Yes	No
Low Pressure Alarm	Yes	Yes
Warranty	One-year	One-year
Agency Approvals	IEC 60601-1 / IEC 60601-1-2 / EN 60601-1-11 CAN/CSA C22.2 No. 60601-1	UL Classified: UL 60601-1 CAN/CSA C22.2 No. 60601-1
Electrical Specifications	100-240V AC, 50/60Hz, 0.2-1A	120V AC, 60Hz, 0.6A

## Clinical Indications

### PRESSURE REDISTRIBUTION

Stage 1-4 Pressure Injuries<sup>2</sup>; Rehabilitation; Burns;  
Neurology; Dermatology; Amputations

### PAIN MANAGEMENT

AIDS; Arthritis; Oncology

<sup>2</sup>In the non-powered mode, the P.R.O. Matt Plus design allows the provision of optimal interface pressures through controlled air cell inflation for at-risk patients in the prevention and treatment of Stage 1 and 2 pressure injuries, and treatment of uncomplicated Stage 3 and 4 injuries in patients with multiple turning surfaces. For Stage 3 and/or Stage 4 treatment, care staff should be able to position the patient off of the pressure wound in at least 2 positions.

In the powered alternating pressure mode, the P.R.O. Matt Plus adds the benefit of cyclic offloading for advanced treatment of uncomplicated Stage 3 or 4 pressure injuries for patients where such therapy may improve pressure redistribution and circulation. In all cases, Joerns clinical indications are guidelines and should be taken only as recommendations for consideration during individual patient assessment by the clinician.