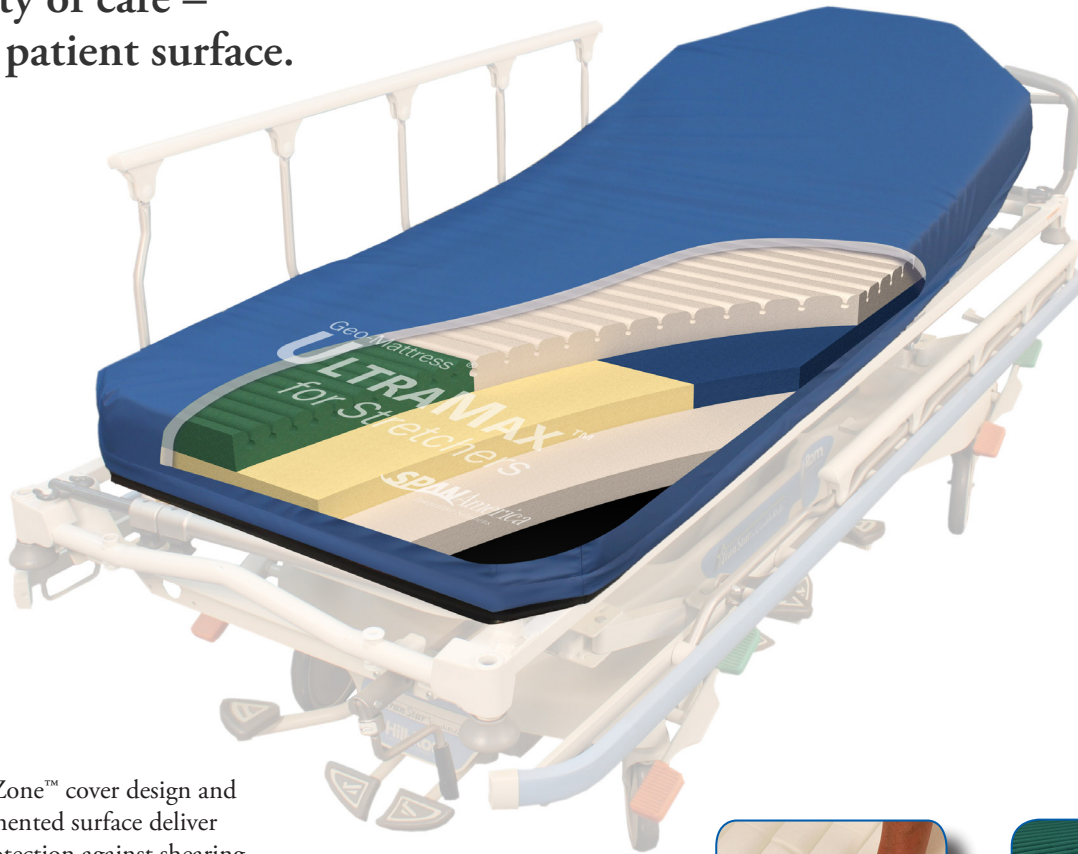


Geo-Mattress[®] **UltraMax[™] for Stretchers**



Premium pressure redistribution support surface

A key to exceptional
continuity of care –
on *every* patient surface.



Ultra Effective

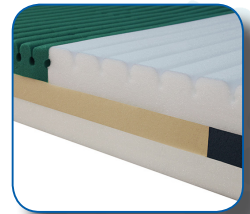
Shear Transfer Zone[™] cover design and Geo-Matt[®] segmented surface deliver unsurpassed protection against shearing, pressure, and heat/moisture buildup.

Ultra Comfortable

Precision engineered to help patients achieve a level of restful comfort typically possible only on full-sized hospital bed surfaces.

Ultra Resilient

Exclusive UHP 500[™] core in seat section and 3-dimensional Zoning[™] design provide support and durability not achievable with traditional HR, latex, or viscoelastic foams.



SPANAmerica
better science. better care.

Geo-Mattress[®] UltraMax™ for Stretchers

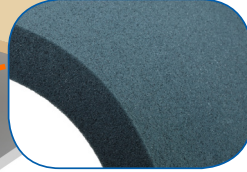
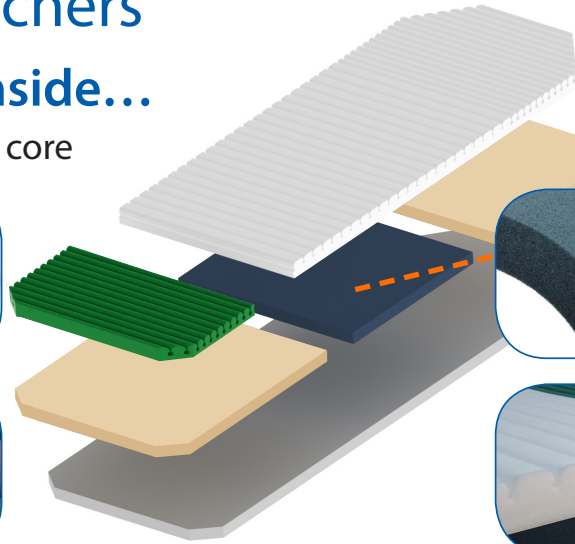
Design Advantages Inside...

Engineered, multi-layer support core

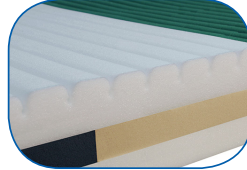
Geo-Matt[®] non-shearing surface creates individually articulating cells; Ring-of-Air[®] channels dissipate heat and moisture.



Extra-soft heel section facilitates immersion to provide added heel protection.



UHP 500™ Ultra High Performance foam in high-fatigue seat section; 55% higher support factor yields superior resiliency and recovery.

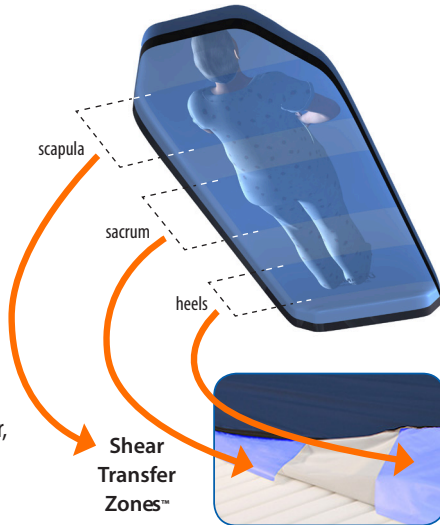


3-Dimensional Zoning™ design provides anatomically-calibrated levels of support and immersion throughout.

...And Out!

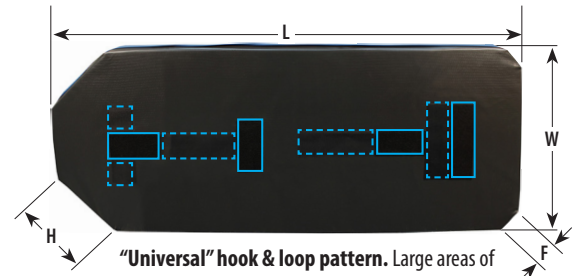
Span-America Exclusive –
Shear Transfer Zone™
cover design (pat. pending)

Silicone-coated, shear-minimizing fabric bands located on the cover's underside help prevent heels, sacrum, and scapula from "digging into" surface. Protect against damaging effects of micro shear, macro shear, and rotational (pivot-induced) shear.



3-sided, flapped zipper for infection control, ease of cleaning.

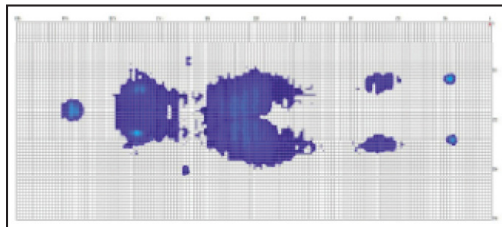
- Fluid resistant, antimicrobial, tear-resistant.
- Wipes clean with standard hospital-grade cleaners.



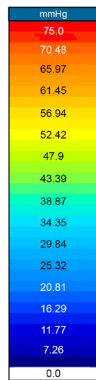
"Universal" hook & loop pattern. Large areas of both hook and loop on bottom of mattress help in anchoring it to a wide variety of stretcher models.

Superior Pressure Management

Computerized imaging confirms outstanding redistribution of pressure across the surface and low overall peak pressures.



Subject cited: Female, 150 lbs., 5'8"
Average pressure: 9.89 mmHg
Peak pressure: 20.12 mmHg (sacrum)



NOTE: Pressure mapping results are representative only. Results will vary depending on a variety of factors including subject's position on surface, weight, body type, and position of frame.

Specifications

[All models listed are 5" high to facilitate maximum immersion]

Item #	Dimensions, overall (L)ength and (W)idth	(H)ead-end taper length	(F)oot-end taper length
47318	75"L x 26"W	7"	0"
49297	75"L x 26"W	13"	4"
97107	76"L x 26"W	10"	4"
10635	76"L x 26"W	12"	5"
2879529	76"L x 27"W	11"	5"
46234	76"L x 29"W	10"	8"
79012	76"L x 30"W	13"	4"
98969	78"L x 27"W	12"	12"
81921	2-pc "Gynie"	n/a	n/a

Other dimensions also available upon request.

- **Supports:** up to 700 lbs.
- **Warranty:** 3-year, non-prorated
- **Mattress Weight:** approx. 20 lbs.
- **All components:** 10% latex-free and 100% PBDE-free
- **Flammability:** Conforms to NFPA 101 (Life Safety Code™); CPSC 16 CFR Parts 1632 and 1633; Cal TB 117 & 129.

SPANAmerica
better science. better care.